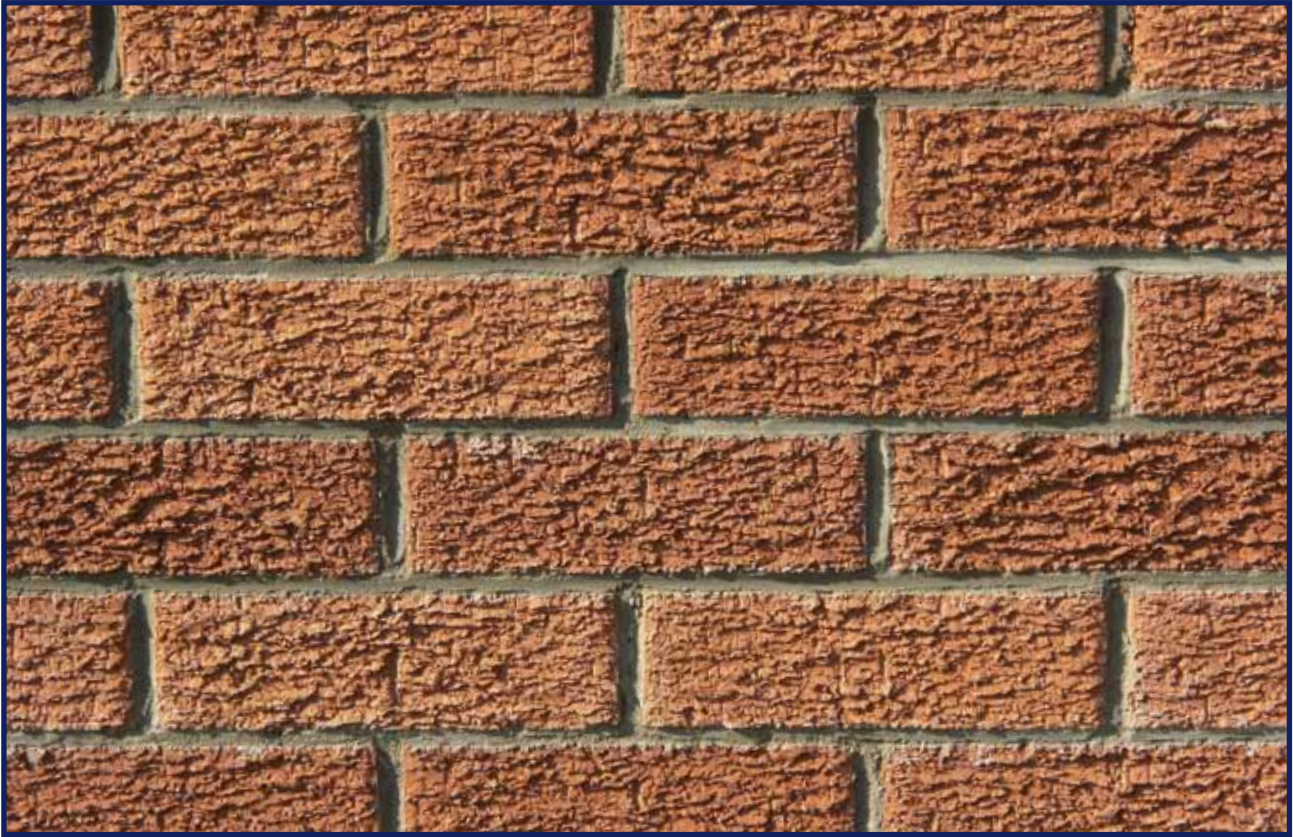


# **BOTHWELL CASTLE RED RUSTIC**



## **PRODUCT INFORMATION & TECHNICAL SPECIFICATION**

Dimensions :	215 x 102.5 x 65mm
Size Tolerance Mean & Range :	T2 & R1
Compressive Strength :	$\geq 55 \text{ N/mm}^2$
Water Absorption :	$\leq 7\%$
Configuration :	Vertically Perforated
Gross Dry Density :	1660 kg/m <sup>3</sup>
Durability :	F2
Active Soluble Salts :	S2
Pack Size :	452